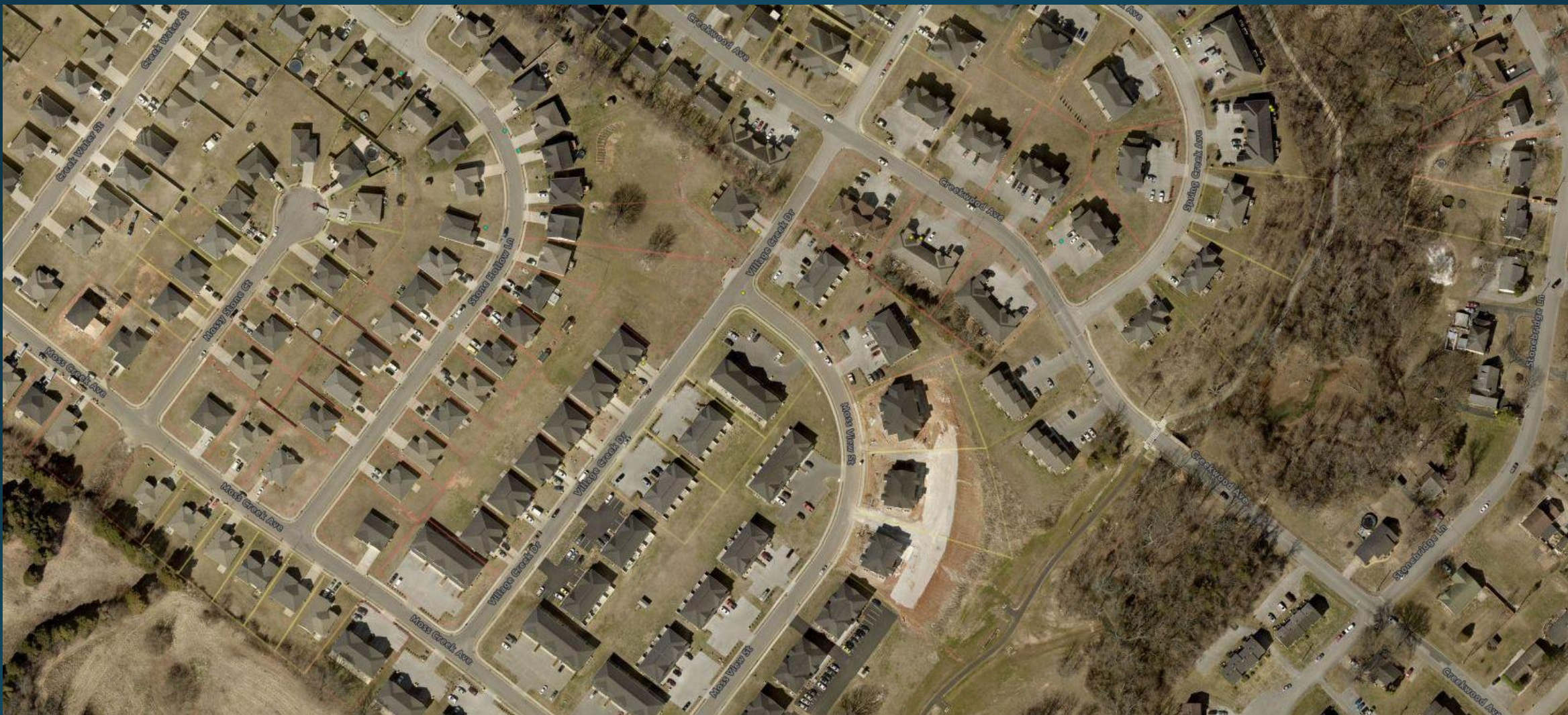
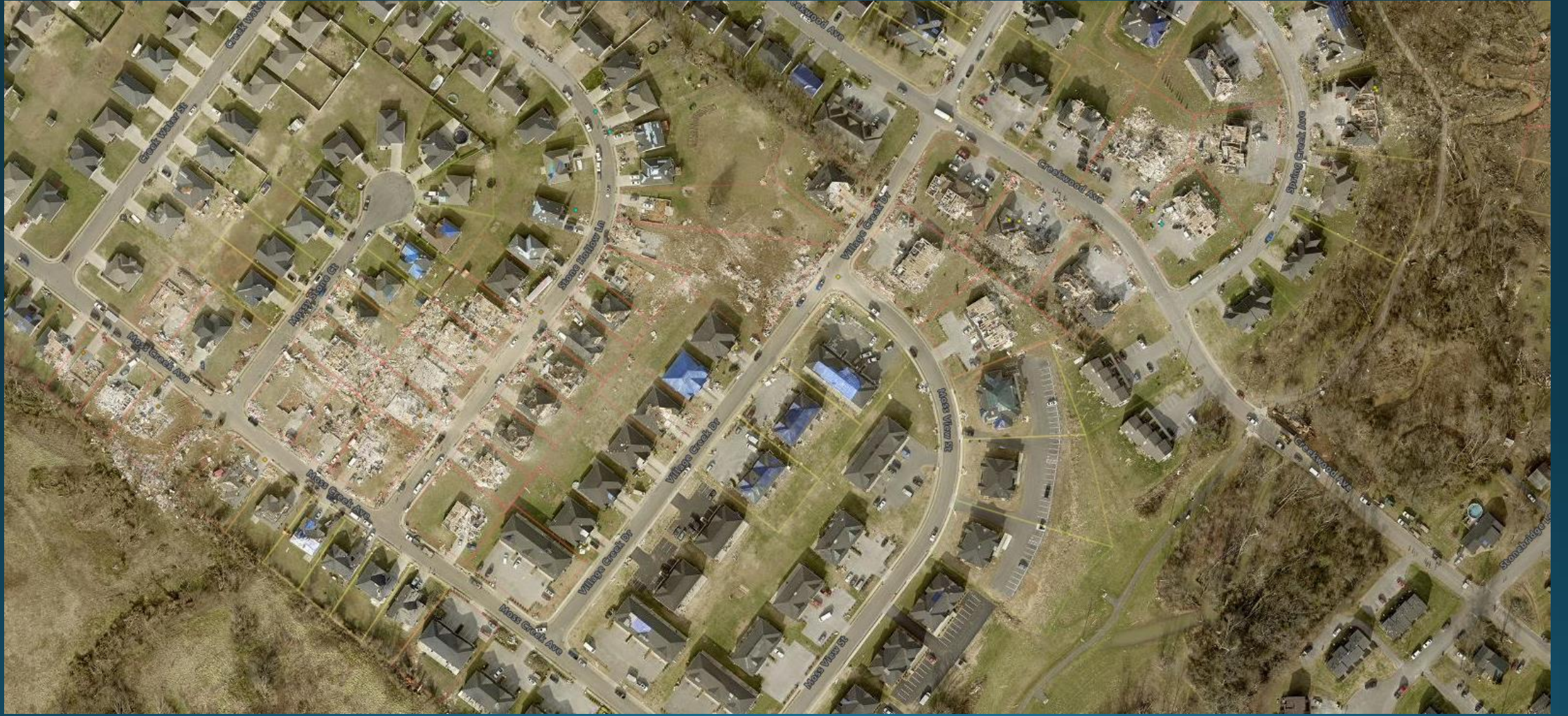


Now What do We Do?

# Disaster Recovery

- <https://bgky.maps.arcgis.com/apps/instant/media/index.html?appid=a998e950154e495db09480a89c248cc9>





# Figure it out.

- Money, People and Stuff
- FEMA is a 4 letter word
- Debris Clean up
- You know your community best
- Communicate with your residents
- Develop, then execute the plan
- Know the Process

# Process

- Immediate-State & Local EM, Red Cross, SBA, FEMA, VOADs
- Intermediate-VOADs, LTRG, Contractors, Local Non-Profits
- Long Term-Community Organizations and CDBG-DR from HUD, DLG

# Funding Sources

- KY EM/FEMA
  - Individual Assistance: ???
  - Public Assistance: \$4.3M Requested/\$3.7M Paid
- KY EM/WKY: SAFE-\$2.5M
- HUD/DLG: CDBG-DR-\$13.3M Awarded/\$3.8M Pending
- KY EM/FEMA: HMGP-\$2.8M
- HUD/DLG/KHC: CDBG-DR, HOME, LIHTC-\$130M